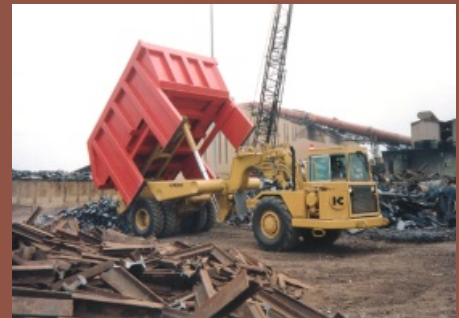


KRESS

CARRIER SYSTEMS



WORLDWIDE KRESS CARRIER LOCATIONS...

A.K. STEEL Ashland, Kentucky Middletown, Ohio ACB-Spain ACME STEEL COMPANY-Illinois ACOS ANHANGUERA S.A.-Brazil ALGOMA STEEL-Ontario, Canada ARBED-Schiffange, Luxembourg ASARCO, INC. El Paso, Texas Hayden, Arizona AST-Terni, Italy ATLANTIC STEEL COMPANY-Georgia BAOSHAN STEEL-China BAYOU STEEL COMPANY-Louisiana BETHLEHEM STEEL Burns Harbor, Indiana Sparrows Point, Maryland Steelton, Pennsylvania BHP COPPER COMPANY-Arizona BHP NEW ZEALAND STEEL-New Zealand BHP NORTHSTAR-Ohio BHP STEEL-Australia Newcastle Port Kembla Westernport Whyalla BHP TEMCO-Tasmania BIRMINGHAM STEEL-Tennessee BORIS KIDRIC-Yugoslavia BRITISH STEEL Clydesdale-Scotland Llanwern-Wales Port Talbot-Wales Teesside-England BSES-England Aldwarke-Rotherham Stocksbridge-Stocksbridge CHAPARRAL STEEL COMPANY-Texas CHARTER STEEL-Wisconsin CHEMETCO-Illinois CODELCO-Chile Chuquicamata El Teniente Salvador COLORADO FUEL & IRON-Colorado COLUMBUS STAINLESS-South Africa COSIPA-Brazil CSC-Ohio CYPRUS MIAMI-Arizona DAE HAN STEEL-South Korea DISPUTADA-Chagres, Chile DOFASCO-Ontario, Canada ELKEM METALS-Ohio	EMPIRE STEEL-Ohio FABRIQUE DE FER-Belgium FENJ FERRONICKEL-Yugoslavia FLORIDA STEEL-Tennessee FMG-Idaho GALLATIN STEEL -Kentucky GENEVA STEEL-Utah GST STEEL-Missouri GULF STATES STEEL, INC.-Alabama HANBO -Asan Bay, South Korea HIGHVELD STEEL & VANADIUM South Africa HISMELT-Australia HOECHST HOLLAND-Holland HYLSA-Mexico Monterrey Puebla INMETCO-Pennsylvania IPSCO, INC. Saskatchewan, Canada Davenport, Iowa ISCOR-South Africa ISPAT INLAND STEEL-Indiana J&L SPECIALTY STEEL-Pennsylvania KANGWON-South Korea KENNECOTT CORPORATION-Utah KIA STEEL-South Korea KNOXVILLE IRON-Tennessee KOREA HEAVY INDUSTRIES-South Korea KRATAU STEEL-Indonesia LAKE ERIE STEEL-, Ontario, Canada ILTV STEEL COMPANY Cleveland, Ohio East Chicago, Indiana METALLOYS, LTD.-South Africa MEXICANA DE COBRE S.A.-Mexico MOUNT ISA MINES-Australia NATIONAL IRANIAN COPPER INDUSTRIES-Iran NATIONAL STEEL CORPORATION Granite City Steel Division-Illinois Great Lakes Steel Division-Michigan NEWPORT STEEL-Kentucky NEW JERSEY STEEL-New Jersey NORANDA, MINES-Canada Murdochville, Quebec Noranda, Quebec NORSK JERNVERK-Norway NSM-Thailand NTS-Thailand NUCOR STEEL Ashoskie, North Carolina Blytheville, Arkansas Charleston, South Carolina Crawfordsville, Indiana Norfolk, Nebraska	NUCOR YAMATO STEEL-Arkansas OLYMPIC DAM-Australia PHELPS DODGE Hurley, New Mexico Playas, New Mexico QIT-Canada ROUGE STEEL COMPANY-Michigan RTM-Spain SALDANHA STEEL-South Africa SAUDI IRON AND STEEL-Saudi Arabia SHEERNESS STEEL-England SICARTSA-Las Truchas, Mexico SIDENOR-Greece SIDERCA-Argentina SIDMAR-Belgium SIDOR-Venezuela SISCO-Thailand SLATER STEEL-Indiana SOLLAC-France SOLUTIA INCORPORATED-Soda Springs, Idaho SOUTHERN CROSS STEEL-South Africa STEEL DYNAMICS-Indiana STELCO, INC.-Canada Edmonton, Alberta Hamilton, Ontario SSI-Thailand SYS/SCS-Thailand SYDNEY STEEL CORPORATION Nova Scotia, Canada TAMSA-Mexico THE TIMKEN COMPANY-Ohio TUBATSE FERROCHROME-South Africa TUNG HO-Taiwan TUSCALOOSA STEEL CORPORATION-Alabama UNIMETAL-Gandrange, France UNITED ENGINEERING STEELS-England Templeborough-Rotherham Tinsley Park-Rotherham USINES GUSTAVE BOEL S.A.-Belgium U.S.S. KOBE-Ohio USS (USX CORPORATION) Braddock, Pennsylvania Fairfield, Alabama Gary, Indiana Lorain, Ohio VOESTALPINE-Austria WCI-Ohio WEIRTON STEEL CORPORATION-West Virginia WESTERN MINING CORP. Kalgoorlie-Australia WHEELING PITTSBURGH STEEL-Ohio
---	--	---

KRESS CARRIERS FOR THE METALS INDUSTRY

SLAB CARRIERS-Pick up and transport steel slabs up to 200 tons (181 t).

SLAG POT CARRIERS-Pick up, transport, pour and skull up to 1220 cu ft (34 cu m).

LADLE CARRIERS-Pick up and transport metal ladies up to 450 tons (408 t).

COIL CARRIERS-Pick up and transport steel coils directly by the eye up to 100 tons (91 t).

COIL STACKERS-Pick up, transport and high stack coils up to 40 tons (36 t).

ELEVATING PALLET CARRIERS-Pick up and transport palletized material up to 500 tons (454 t).

CONTAINER CARRIERS-Pick up, transport and dump containers or pallets up to 135 tons (122 t).

SCRAP BUCKET CARRIERS-Pick up, weigh and transport scrap charging buckets up to 3500 cu ft (1100 cu m).

INDUSTRIAL DUMP TRUCKS-Articulated design, payload capacities from 20 tons (118 t) to 100 tons (91 t).

HIGH STACKERS-Pick up, transport and high stack materials using tong, magnet, prong, and fork quick connect attachments.

PLUS ... KRESS VEHICLES USED IN THE MINING AND CONSTRUCTION INDUSTRIES INCLUDE ALL TERRAIN DUMP TRUCKS, SCRAPERS AND BOTTOM DUMP COAL HAULERS



KRESS
CORPORATION
227 Illinois Street • Brimfield, Illinois, U.S.A. 61517
Phone: (309) 446-3395 • Fax: (309) 446-9625
sales@kresscarrier.com • www.kresscarrier.com

KRESS and **K** are registered trademarks of Kress Corporation.
Caterpillar and Cat are trademarks of Caterpillar Inc.
© 2001 Kress Printed in U.S.A.